

GRAPHICS DEPARTMENT

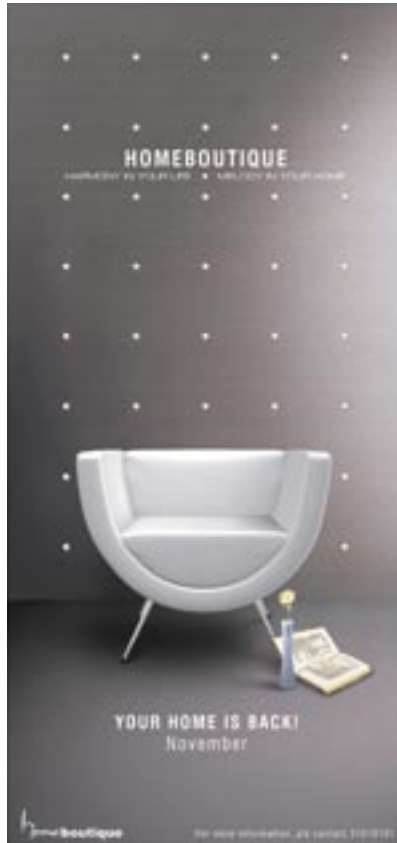
Examples of our work

SOME OF OUR CLIENTS:



AquaTT
Audisbooks
Broomfield House
Chase Windows
Chela
Enfield Arts Partnership
Enfield Council
Feelgood (health centre)
Fisher Research
Haringey Council
JN Financial
JT Exec
MRDF
North London
NLSA
Pearson McKinsey
Stratford & District
Top Framing
Urban Futures
WorldTrak

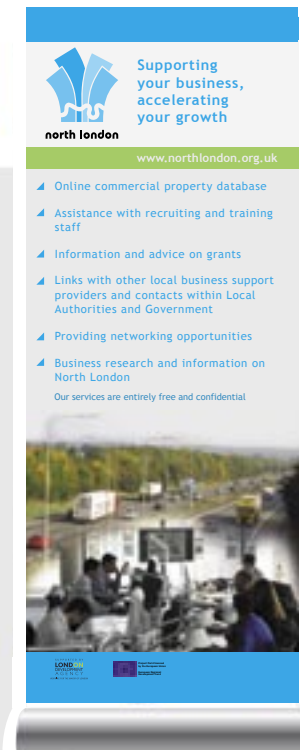
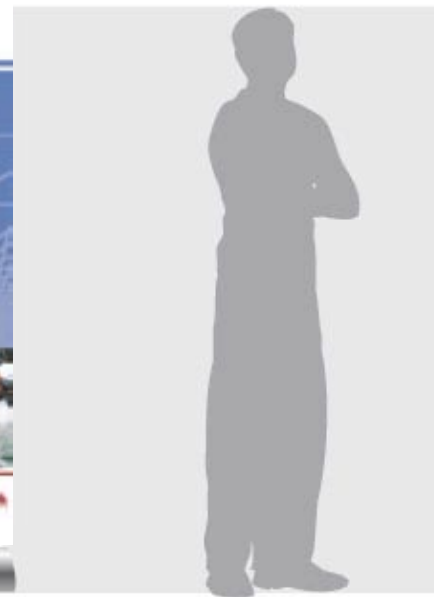
Banner Design:



1.80cm



1.80cm







An oasis in the heart of Newham

A regional community park on the Limmo Peninsula on the River Lea, just south of Canning Town, is currently undergoing further development thanks to a helping hand from A2E.

Bow Creek Ecology Park, managed by Lea Valley Regional Park Authority, has received more than £60,000 in funding from A2E. The funding is being used to improve the accessibility to the park. The physical project, being delivered by Groundwork East London, involves the creation of a footpath which links Wharfedale Road, under the new A13 Bridge, to the park entrance.

Groundwork East London landscape architect, Ian Hingley says the path will be well lit and the black and blue striped footpath will lead pedestrians and cyclists alongside an avenue of Italian Cypress trees into the park.

"The landscaping itself will act as a sign for the park, being visible from both the DLR and the A13 footpath and cycle path."

The park is currently regarded as a regional recreational facility as there are no residential developments in the immediate vicinity that could claim 'ownership'. This has created a major challenge for those involved in linking the park to the nearest communities. Groundwork East London has carried out community consultation and engagement activities funded by Sustainable Accessible Urban Landscapes (SAUL). This programme has focussed on raising the awareness of the park and two other local sites, with local communities.

Last summer a number of community activities took place at Bow Creek Ecology Park. Working in conjunction with Lea Rivers Trust about 150 local children took part in wildlife and art programmes which included 'pond dipping' and photography. The activities were also offered to local schools and over 400 pupils took part in the programmes during October last year.

Groundwork East London community projects co-coordinator, Sarah Williams says the activities made good use of the park as an outdoor classroom and the feedback they received from the schools was very positive.

Groundwork East London hopes to support the park authority to run similar activities in the future.

For further information on the Bow Creek development please contact Groundwork East London
Telephone: 020 8985 1755



Kids enjoying the wildlife activities at Bow Creek last summer

Contents:	
A2E Chair re-elected	2
An update from A2E programme managers	2
Passion for achievement and a helping hand goes a long way	3
All aboard for the AGM	3
Life in East London caught on film	4
Parents unite to support one another	5
An innovative approach to childcare training ensures success	5
Future funding event attracts numbers	6
A2E project networking event – A success!	6

A2E News - www.a2e.org.uk | 2

A2E Chair re-elected

I have a vision for Newham where local people really do benefit from the changes happening around them, where vision becomes reality through the shared vision of Newham and the A2E as well as the new and vibrant changes happening in the area.

I hope you share my vision of a Newham where the people have the power to make changes happen around them, and of a Newham where new residents embrace the A2E as well as the new and vibrant changes happening in the area.

I was elected as Chairperson for the first time in 2004, at the September AGM and I am delighted to have been re-elected for a second year.

Thank you for your continued support.

Paul Smith
A2E Chair

Paul Smith
A2E Chair

Paul Smith
A2E Chair

Paul Smith
A2E Chair

Paul Smith
A2E Chair

Paul Smith
A2E Chair

Paul Smith
A2E Chair

Paul Smith
A2E Chair

Paul Smith
A2E Chair

Paul Smith
A2E Chair

Paul Smith
A2E Chair

Paul Smith
A2E Chair

Paul Smith
A2E Chair

Paul Smith
A2E Chair

Paul Smith
A2E Chair

Paul Smith
A2E Chair

Paul Smith
A2E Chair

Paul Smith
A2E Chair

Paul Smith
A2E Chair

Paul Smith
A2E Chair

Paul Smith
A2E Chair

Paul Smith
A2E Chair

Paul Smith
A2E Chair

Paul Smith
A2E Chair

Paul Smith
A2E Chair

Paul Smith
A2E Chair

Paul Smith
A2E Chair

Paul Smith
A2E Chair

Paul Smith
A2E Chair

Paul Smith
A2E Chair

Paul Smith
A2E Chair

Paul Smith
A2E Chair

Paul Smith
A2E Chair

Paul Smith
A2E Chair

A2E News - www.a2e.org.uk | 3

Passion for achievement and a helping hand goes a long way

A Teaching Assistant Programme is helping local residents in Newham to meet their own aspirations.

The Teaching Assistant Programme is part of the A2E project to meet the needs of local residents in Newham. The programme is a two-year programme of support for local residents who want to become Teaching Assistants. The programme is a two-year programme of support for local residents who want to become Teaching Assistants.

Paul Smith
A2E Chair

Paul Smith
A2E Chair

Paul Smith
A2E Chair

Paul Smith
A2E Chair

Paul Smith
A2E Chair

Paul Smith
A2E Chair

Paul Smith
A2E Chair

Paul Smith
A2E Chair

Paul Smith
A2E Chair

Paul Smith
A2E Chair

Paul Smith
A2E Chair

Paul Smith
A2E Chair

Paul Smith
A2E Chair

Paul Smith
A2E Chair

Paul Smith
A2E Chair

Paul Smith
A2E Chair

Paul Smith
A2E Chair

Paul Smith
A2E Chair

Paul Smith
A2E Chair

Paul Smith
A2E Chair

Paul Smith
A2E Chair

Paul Smith
A2E Chair

Paul Smith
A2E Chair

Paul Smith
A2E Chair

Paul Smith
A2E Chair

Paul Smith
A2E Chair

Paul Smith
A2E Chair

Paul Smith
A2E Chair

Paul Smith
A2E Chair

Paul Smith
A2E Chair

Paul Smith
A2E Chair

Paul Smith
A2E Chair

Paul Smith
A2E Chair

Paul Smith
A2E Chair

Paul Smith
A2E Chair

Paul Smith
A2E Chair

Paul Smith
A2E Chair

Paul Smith
A2E Chair

Paul Smith
A2E Chair

Paul Smith
A2E Chair

Paul Smith
A2E Chair

Paul Smith
A2E Chair

Paul Smith
A2E Chair

Paul Smith
A2E Chair

Paul Smith
A2E Chair

Paul Smith
A2E Chair

Paul Smith
A2E Chair

Paul Smith
A2E Chair

Paul Smith
A2E Chair

Paul Smith
A2E Chair

Paul Smith
A2E Chair

Paul Smith
A2E Chair

Paul Smith
A2E Chair

Paul Smith
A2E Chair

Paul Smith
A2E Chair

Paul Smith
A2E Chair

Paul Smith
A2E Chair

Paul Smith
A2E Chair

Paul Smith
A2E Chair

Paul Smith
A2E Chair

Paul Smith
A2E Chair

Paul Smith
A2E Chair

Paul Smith
A2E Chair

Paul Smith
A2E Chair

Paul Smith
A2E Chair

Paul Smith
A2E Chair

Paul Smith
A2E Chair

Paul Smith
A2E Chair

Partners:



Partners:

Partners:

Partners:

Partners:

Partners:

Partners:

Partners:

Partners:

Partners:

Partners:

Partners:

Partners:

Partners:

Partners:

Partners:

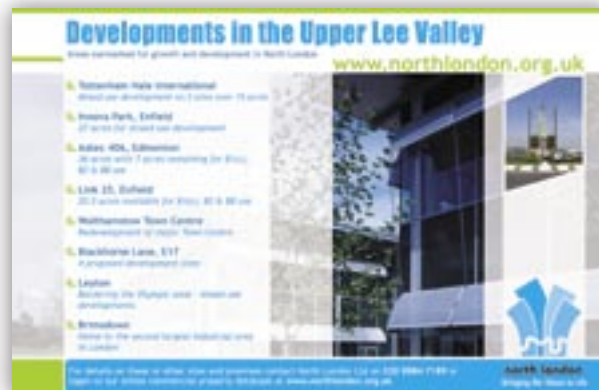
Partners:

Partners:

Partners:

A5, A6, DL sizes

Postcard Design:



Are you constantly looking
for your drivers and vehicles?

Worldtrak - Fleet Management in a Box... Puts YOU back in control!



FREE Professional business support
and expert advice worth £2,500*!

Give your company
every opportunity to grow,
increase profits
and become truly competitive...



Are you constantly looking
for your drivers and vehicles?



Worldtrak - Fleet Management in a Box... Puts YOU back in control!







We also design: Posters, Illustrations, Flash Movies
Website appearances and any print media

GRAPHICS DEPARTMENT

Thank you for your time

for any enquiries please contact us on 0845 345 2572